



# Vimentin mouse mAb(ABT281)

<b>Catalog No</b>	YP-Ab-15631
<b>Isotype</b>	IgG
<b>Reactivity</b>	Human;Mouse;Rat
<b>Applications</b>	IHC,WB
<b>Gene Name</b>	VIM
<b>Protein Name</b>	Vimentin
<b>Immunogen</b>	Synthesized peptide derived from human Vimentin
<b>Specificity</b>	The antibody can specifically recognize human Vimentin protein. In western blotting of Hela cell lysate, the antibody can label a 54KDa band corresponding to Vimentin.
<b>Formulation</b>	Liquid in PBS containing 50% glycerol, 0.5% BSA and 0.64% sodium azide.
<b>Source</b>	Mouse, Monoclonal/IgG1, Kappa
<b>Purification</b>	The antibody was affinity-purified from mouse ascites by affinity-chromatography using specific immunogen.
<b>Dilution</b>	IHC-p 1:100-500, WB 1:200-1000, IF 1:100-500
<b>Concentration</b>	1 mg/ml
<b>Purity</b>	≥90%
<b>Storage Stability</b>	-20°C/1 year
<b>Synonyms</b>	Vimentin
<b>Observed Band</b>	
<b>Cell Pathway</b>	Cytoplasm . Cytoplasm, cytoskeleton . Nucleus matrix . Cell membrane .
<b>Tissue Specificity</b>	Highly expressed in fibroblasts, some expression in T- and B-lymphocytes, and little or no expression in Burkitt's lymphoma cell lines. Expressed in many hormone-independent mammary carcinoma cell lines.
<b>Function</b>	function:Vimentins are class-III intermediate filaments found in various non-epithelial cells, especially mesenchymal cells.,online information:Vimentin entry,PTM:One of the most prominent phosphoproteins in various cells of mesenchymal origin. Phosphorylation is enhanced during cell division, at which time vimentin filaments are significantly reorganized.,sequence caution:Intron retention.,similarity:Belongs to the intermediate filament family.,subunit:Homopolymer. Interacts with HCV core protein. Interacts with LGSN and SYNM.,tissue specificity:Highly expressed in fibroblasts, some expression in T- and B-lymphocytes, and little or no expression in Burkitt's lymphoma cell lines. Expressed in many hormone-independent mammary carcinoma cell lines.,
<b>Background</b>	This gene encodes a member of the intermediate filament family. Intermediate filaments, along with microtubules and actin microfilaments, make up the



cytoskeleton. The protein encoded by this gene is responsible for maintaining cell shape, integrity of the cytoplasm, and stabilizing cytoskeletal interactions. It is also involved in the immune response, and controls the transport of low-density lipoprotein (LDL)-derived cholesterol from a lysosome to the site of esterification. It functions as an organizer of a number of critical proteins involved in attachment, migration, and cell signaling. Mutations in this gene causes a dominant, pulverulent cataract.[provided by RefSeq, Jun 2009],

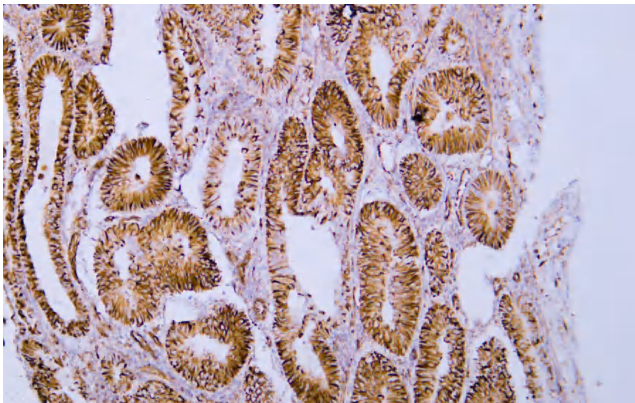
**matters needing attention**

Avoid repeated freezing and thawing!

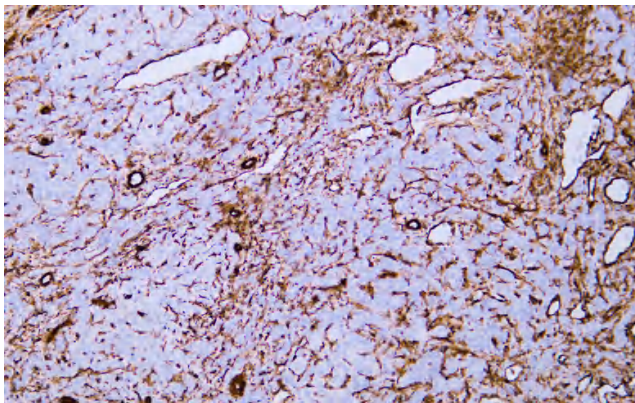
**Usage suggestions**

This product can be used in immunological reaction related experiments. For more information, please consult technical personnel.

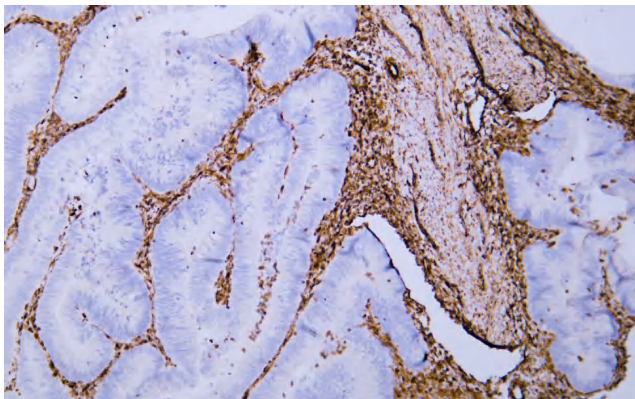
## Products Images



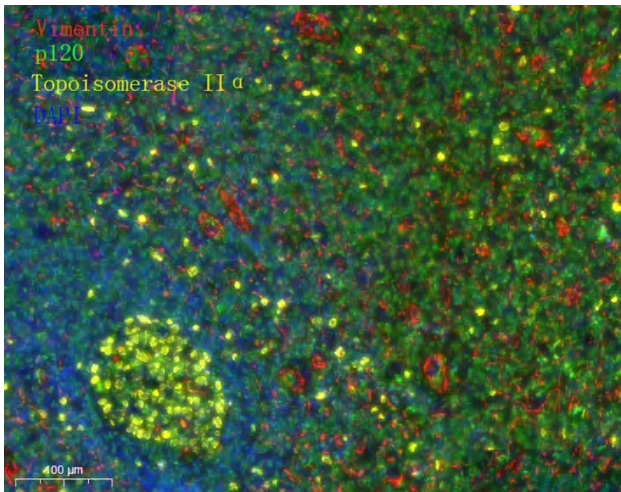
Human endometrial adenocarcinoma tissue was stained with Anti-Vimentin (ABT281) Antibody



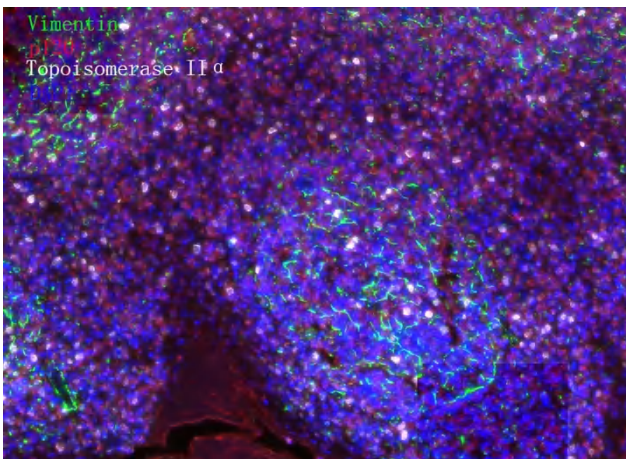
Human hepatocellular carcinoma tissue was stained with Anti-Vimentin (ABT281) Antibody



Human rectal carcinoma tissue was stained with Anti-Vimentin (ABT281) Antibody



Fluorescence multiplex immunohistochemical analysis of Human tonsil tissue (formalin-fixed paraffin-embedded section). Merged staining of Anti-Vimentin (YM6918), Anti-p120 (YM6086), Anti-Topoisomerase II $\alpha$  (YM6914). The immunostaining was performed on a Leica Biosystems BOND<sup>®</sup> MAX instrument with an Sextuple-Fluorescence kit (RS0039, Immunoway). The section was incubated in 3 rounds of staining; sequentially for Anti-Vimentin (YM6918 1:200), Anti-p120 (YM6086 1:200), Anti-Topoisomerase II $\alpha$  (YM6914 1:200).; each using a separate fluorescent tyramide signal amplification system. EDTA based antigen retrieval (Leica Biosystems BOND<sup>®</sup> Epitope Retrieval Solution 2, pH 9.0, 20 minutes) was used in between rounds of tyramide signal amplification to remove the antibody from the previous round, to avoid any cross-reactivity. DAPI (dark blue) was used as a nuclear counter stain. Microscopy and pseudocoloring of individual dyes was performed using a Slideviewer Imaging System (3D histech).



Fluorescence multiplex immunohistochemical analysis of Human tonsil tissue (formalin-fixed paraffin-embedded section). Merged staining of Anti-Vimentin (YM6918), Anti-p120 (YM6086), Anti-Topoisomerase II $\alpha$  (YM6914). The immunostaining was performed on a Leica Biosystems BOND<sup>®</sup> MAX instrument with an Sextuple-Fluorescence kit (RS0039, Immunoway). The section was incubated in 3 rounds of staining; sequentially for Anti-Vimentin (YM6918 1:200), Anti-p120 (YM6086 1:200), Anti-Topoisomerase II $\alpha$  (YM6914 1:200).; each using a separate fluorescent tyramide signal amplification system. EDTA based antigen retrieval (Leica Biosystems BOND<sup>®</sup> Epitope Retrieval Solution 2, pH 9.0, 20 minutes) was used in between rounds of tyramide signal amplification to remove the antibody from the previous round, to avoid any cross-reactivity. DAPI (dark blue) was used as a nuclear counter stain. Microscopy and pseudocoloring of individual dyes was performed using a Slideviewer Imaging System (3D histech).